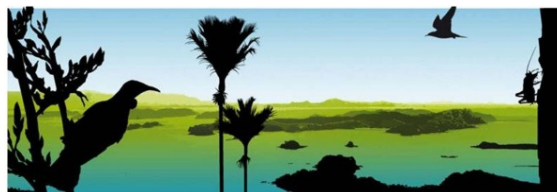


# PROJECT ISLAND SONG



## Project Island Song and associated planting activities Autumn/Winter 2015

There is a full restoration programme this autumn and winter which is published below for your diary. If you are interested in being part of these projects, for island planting and Wairoa Stream planting activities contact Rod Brown at [summerhouse.kerikeri@gmail.com](mailto:summerhouse.kerikeri@gmail.com). For Tangatapu wetlands Sandra Scowen at [sandrascowen@vodafone.co.nz](mailto:sandrascowen@vodafone.co.nz).

Planting days are in bold. Please be aware all dates are weather dependent

When	What	Where	Status
Wednesday 11 March	Spot spraying and release spraying	Urupukapuka Squid Bay	Completed
Wednesday 18 March	Release spraying	Waewaetorea	Completed
<b>Sunday 26<sup>th</sup> April</b>	<b>Public planting*</b>	<b>Tangatapu wetlands</b>	
<b>Sunday 3 May</b>	<b>Public planting*</b>	<b>Tangatapu wetlands hillside</b>	
Date to be arranged	Track cutting	Homestead Bay	For planting access
Thursday 7 May	Plants for Frenchman's Line and Homestead catchment	Plant transport to Moturua. Land at Homestead Bay	
<b>Sunday 10<sup>th</sup> May</b>	<b>Planting Frenchman's &amp; Homestead Bay</b>	<b>Moturua</b>	<b>1150 plants</b>
Tuesday 19 <sup>th</sup> May		Plant Transport to Squid Bay	1600 plants
<b>Sunday 24 May (spare day next fine day if weather poor)</b>	<b>Mass public planting</b>	<b>Urupukapuka, Squid Bay</b>	<b>Fullers sponsoring transport for 100 people</b>
Tuesday 2 June	Plant transport	Moturua, Waiiti Bay	
<b>Saturday 6 June</b>	<b>Planting</b>	<b>Moturua, Waiiti Bay</b>	<b>370 plants</b>
Monday 8 June	Plant transport	Urupukapuka, Entico Bay	600 plants & start initial planting
<b>Sunday 14 June</b>	<b>Planting</b>	<b>Urupukapuka, Entico Bay</b>	<b>600 plants</b>
<b>Sunday 21<sup>st</sup> June</b>	<b>Mass public planting*</b>	<b>Wairoa Stream, Samaree Reserve</b>	<b>1300 plants</b>
<b>Sunday 28<sup>th</sup> June</b>	<b>Mass public planting spare day*</b>	<b>Wairoa Stream, Samaree Reserve</b>	

\*In support of [Living Waters](#)

Proudly supported by:



Northland Toyota

