

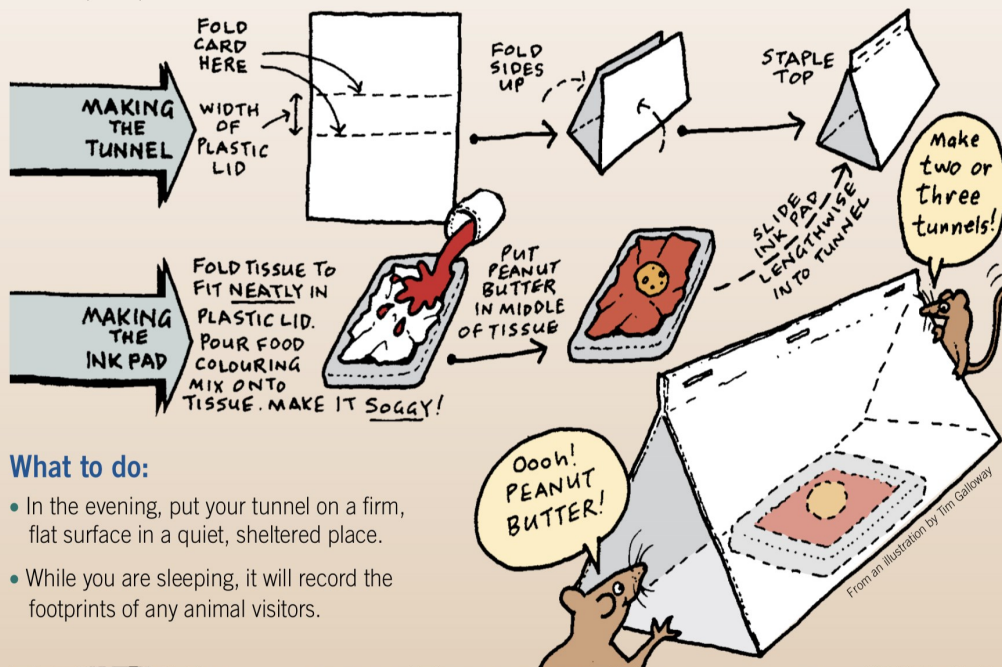
Are there rats in your garden?

Make your own Tracking Tunnels

What is a tracking tunnel? Tracking tunnels are used by scientists to find out which kinds of creatures are in gardens, nature reserves or national parks. You get a rat or other animal to walk across an ink pad to eat some food. It will then leave its inky footprints on the tunnel floor.

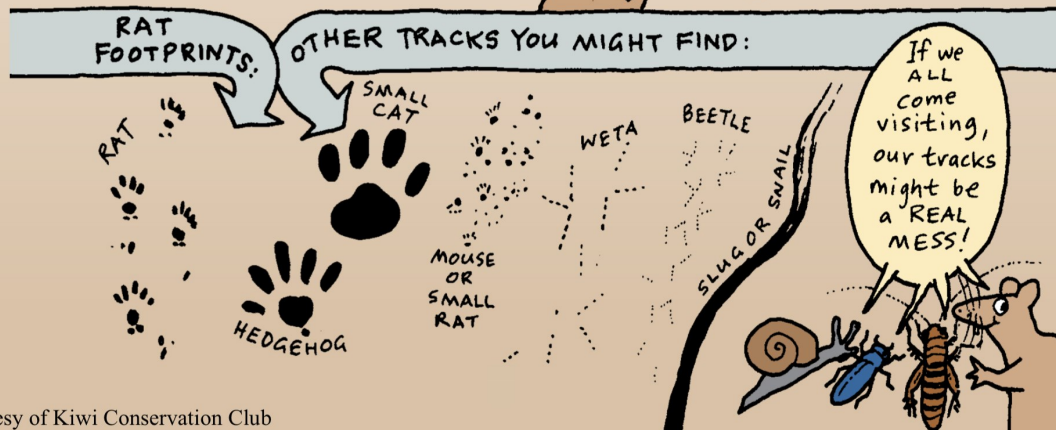
What you need:

- **Tunnel** – Thin white card, A3 size or larger.
- **Ink pad** – 1 rectangular plastic lid (margarine or butter tub lids are good) and 1 tissue.
- **Ink** – 1 teaspoon food colouring mixed with 2 tsp water.
- Stapler
- 1 teaspoon peanut butter



What to do:

- In the evening, put your tunnel on a firm, flat surface in a quiet, sheltered place.
- While you are sleeping, it will record the footprints of any animal visitors.



Courtesy of Kiwi Conservation Club